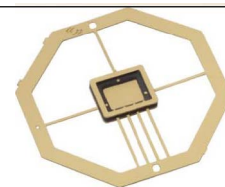
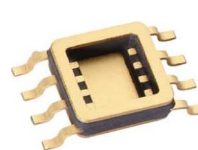
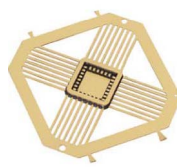
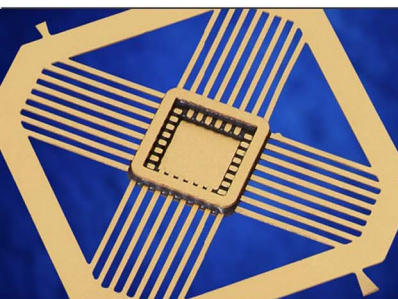


MOLDED CERAMIC PACKAGES

HIGH FREQUENCY
AND
HIGH SPEED
PACKAGING



StratEdge has dozens of MC Series packages in standard, open-tooled configurations, with some designs optimized to operate at frequencies up to 18 GHz. All of the MC packages are MIL-STD hermetic. If you need a surface mount package, StratEdge can provide these packages with gull-wing formed leads. Flexibility is another reason to use an MC package since it's inexpensive to change the lead design if you need to match an existing footprint. Because of their versatility, the MC family is used to package many devices including switches, amplifiers, modulator drivers, MEMS, diodes, FETs, ADCs, DACs, multifunctional MMICs, and more.

- Fully hermetic
- High thermal conductivity bases available
- Supplied with lid
- Custom options available
- Designs available for DC to 18 GHz
- Low cost
- Surface mount optional

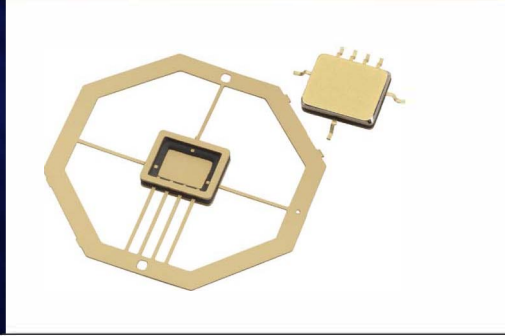
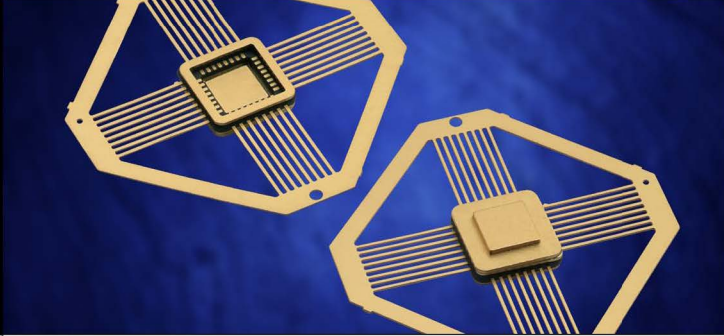
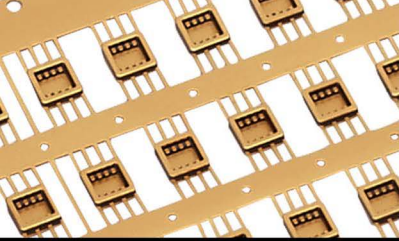
BT Electronics
122 chemin de la cavée,
78630 Orgeval
01.69.18.16.60
contact@bt-
electronics.com

PN	Seal Ring Outside Dimensions	Cavity Dimensions	Lid PN	Lead Count	Max Lead Count
G1010M-9	.098" X .098"	.030" X .030"	CL1010	3	4
G1111M-1	.118" X .118"	.035" X .035"	CL1111	6	8
G1212M-2	.125" X .125"	.070" X .040"	CL1212	6	10
G1616M-1	.166" X .166"	.090" X .070"	CL1616	8	12
G2121M-1	.215" X .215"	.120" X .120"	CL2121	16	28
G2121M-2	.215" X .215"	.100" X .090"	CL2121	12	28
G2121M-7	.215" X .215"	.120" X .120"	CL2121	32 ¹	28
G2121M-8	.215" X .215"	.120" X .120"	CL2121	8	28
G2420M-1	.245" X .205"	.145" X .105"	CL2420	7	14
G2525M-1	.250" X .250"	.150" X .150"	CL2525	10	32
G2525M-6	.250" X .250"	.150" X .150"	CL2525	32	32
G2616M-1	.265" X .165"	.165" X .065"	CL2616	14	14
G2626M-1	.265" X .265"	.150" X .150"	CL2626	24	32
G3030M-1	.305" X .305"	.190" X .190"	CL3030	14	36
G3333M-1	.330" X .330"	.190" X .190"	CL3333	32	40
G3725M-1	.375" X .250"	.290" X .135"	CL3725	14	16
G3838M-1	.375" X .375"	.300" X .254"	CL3838	36	44
G3838M-4	.375" X .375"	.265" X .265"	CL3838	36	44
G4040M-5	.400" X .400"	.260" X .260"	CL4040	52	52
G5050M-1	.500" X .500"	.390" X .390"	CL5050	12	64

¹ This includes 4 leads on the outside of the package not intended for signals.
Other custom configurations available upon request. Please consult factory.

U.S. Patent#s: 6,639,305; 6,271,579; 6,172,412; 5,448,826; 5,465,008; 5,692,298; 5,753,972; 5,736,783; 6,261,867; 09/054,049 & other patents pending
Foreign Patent#s: NI 091074; NI 118360; NI 186089; EP 0902976; AT 220245; AU 199724473; AU 199726655; AU 199918149; DE 69713771; EP 0902975;
JP 2000510286; JP 2000510287; TW 322612; TW 4000590; TW 554451; WO 199743786; WO 199743787; WO 199934443; WO 2002063684 & other patents pending

MOLDED CERAMIC PACKAGES



MC SERIES

MC packages can be made with copper composite bases that provide excellent thermal conductivity. Below are a few of the standard, open-tooled MC packages with copper composite bases. They give you a low cost way to package your high power device in a fully hermetic package.

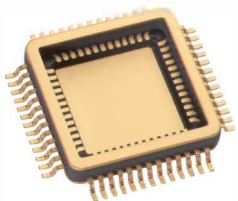
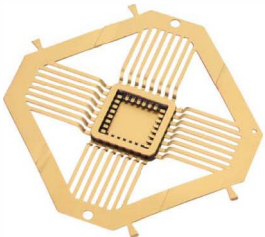
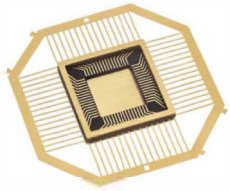
PN	Seal Ring Outside Dimensions	Pedestal Dimensions	Lid PN	Lead Count	Max Lead Count
G1616CT-2	.166" X .166"	.090" X .070"	CL1616	8	12
G2121CT-1	.215" X .215"	.120" X .120"	CL2121	16	32
G2525CT-4	.270" x .270"	.150" x .150"	CL2525	24	32
G5050CT-3	.500" x .500"	.370" x .370"	CL5050	26	64
G6262CT-6	.625" x .625"	.310" x .310"	CL6262	64	80

The packages below have co-planar waveguide (CPW) transitions that provide good performance up to 18 GHz as drop-ins (straight leads) and to 12 GHz as surface mount (formed leads). Millions have been used in OC-48 and OC-192 applications.

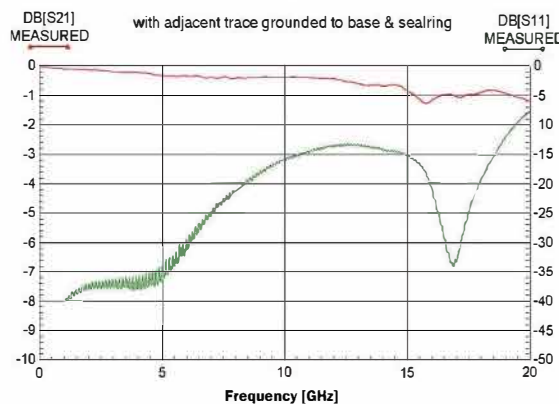
PN	Seal Ring Outside Dimensions	Cavity Dimensions	Lid PN	Lead Count	Max Lead Count
G1616M-7	.166" X .166"	.110" X .075"	CL1616	12	12
G2121M-7	.215" X .215"	.120" X .120"	CL2121	32¹	28
G2121M-7F	.215" X .215"	.120" X .120"	CL2121	32²	28
G4040M-5	.400" X .400"	.260" X .260"	CL4040	52	52
G5050M-5	.500" X .500"	.390" X .390"	CL5050	25	64

¹ This includes 4 leads on the outside of the package not intended for signals.

² Formed leads, cavity down.



StratEdge MC Series Package Single Transition
Straight Leads



StratEdge MC Series Package Single Transition
Gull-wing Formed Leads

